



**ACCUWEIGH**

Onboard and Vehicle  
Weighing Systems

# XW SHV WIRELESS CRANE SCALES

Trade-Approved, Class 4 Crane Scales, in  
2t, 5t and 12.5t Capacities.



**XW 50L TRANSDUCER  
ASSEMBLY**



**XW 50L TRANSDUCER  
ASSEMBLY**

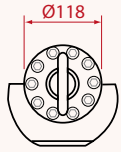
## HIGHLIGHTS

- Trade-Approved to Class 4
- Available with Either Hooks and Shackles for Cargo Cranes, or as separate Weigh Links for rotating attachments
- Capacities of 2t , 5t and 12.5t
- Overload and Torque Protected Loadcell
- Extremely Low Power Consumption
- Includes Spare Rechargeable Battery and Charger

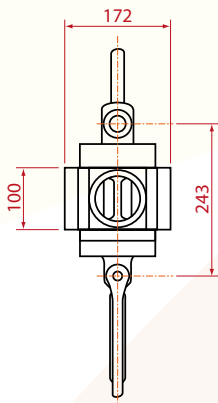
## TECHNICAL DATA

Radio Frequency	868MHz
Number of Channels	10
Power Output	5mW
Modulation	FSK
Bit Rate	4.8kbits/s
Data Security	FEC, CRC
Interface	Bluetooth
Supply Voltage	10-30VDC
Battery Life in Days	7
Charger Time in Hours	2
Divisions	1000
Accuracy to Full Scale	±1 Division
Weight of XW 20 SHV	15kg
Weight of XW 50 SHV	18kg
Weight of XW 20(50)	23kg

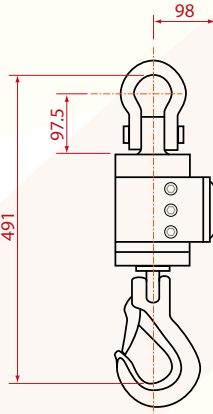
# XW SHV WIRELESS CRANE SCALE



TOP VIEW



FRONT VIEW

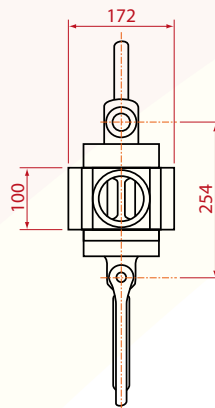


RIGHT SIDE VIEW

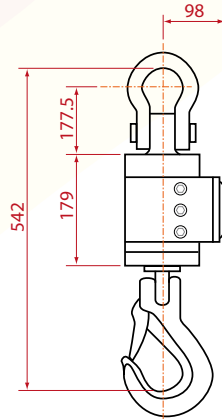
## XW 20 SHV DIMENSIONS



TOP VIEW

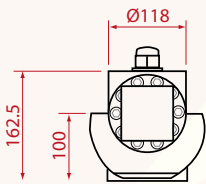


FRONT VIEW

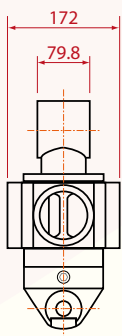


RIGHT SIDE VIEW

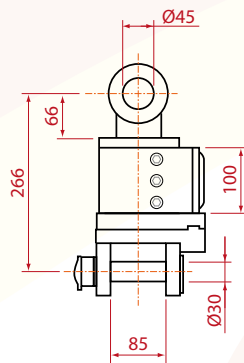
## XW 50 SHV DIMENSIONS



TOP VIEW



FRONT VIEW



RIGHT SIDE VIEW

## XW 20(50) DIMENSIONS



**"BLUESCALE"  
REMOTE CONTROL  
HAND SET**

Digital receiver with bluetooth interface for downloading of weighing data to PDA

**Accuweigh Pty Ltd**

WESTERN AUSTRALIA (HEAD OFFICE):  
PHONE: (08) 9259 5535

SOUTH AUSTRALIA OFFICE:  
PHONE: (08) 8447 5011

NEW SOUTH WALES (SYDNEY) OFFICE:  
PHONE: (02) 9728 4877



[www.accuweigh.com.au](http://www.accuweigh.com.au)

VICTORIA OFFICE:  
PHONE: (03) 9548 5554

NEW SOUTH WALES (NEWCASTLE) OFFICE:  
PHONE: (02) 4966 8900

QUEENSLAND OFFICE:  
PHONE: (07) 3265 5520