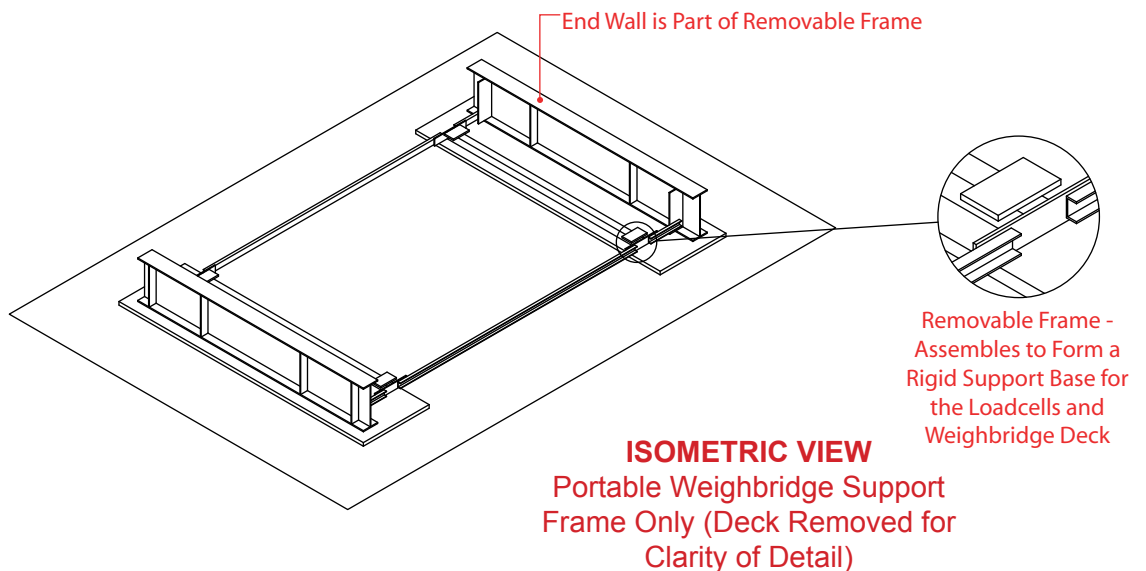
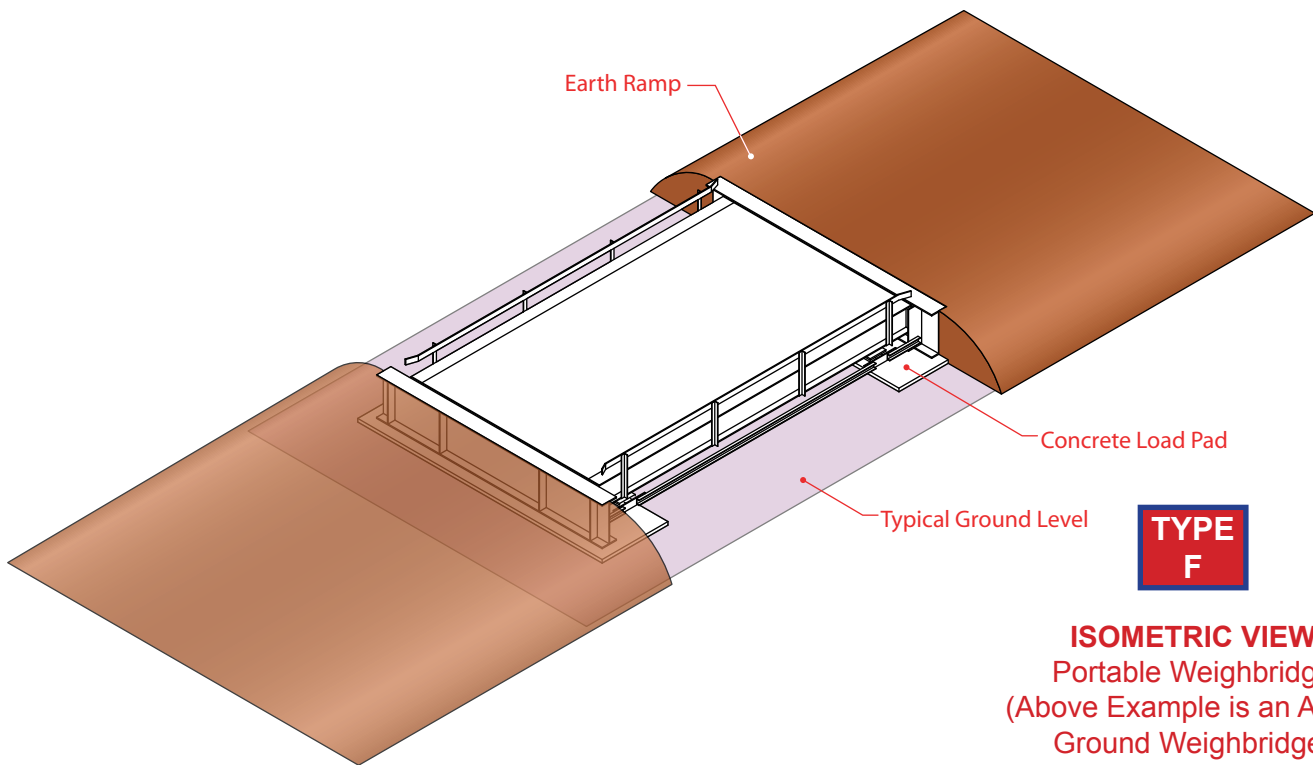


PORTABLE WEIGHBRIDGE INSTALLATION CONSIDERATIONS

Portable weighbridges are typically a variation of the above ground weighbridge design. Rather than a complete concrete foundation being constructed, rectangular concrete slabs are constructed at load bearing locations only (loadcell areas only). A removable frame is assembled from components, forming a rigid support base for the loadcells and deck. The deck may be a fully steel design (to make it lighter for relocating) or the typical concrete/steel deck, making it lighter and easier to transport than a concrete/steel deck.

Earth ramps are constructed to access the deck. Loadcells can be fitted with connectors (prior to supply) to assist assembly and disassembly. The digital indicator can be mounted in an enclosure that bolts to the side of the deck.

Considerations for an above ground weighbridge apply to a portable weighbridge. Once assembled, the ground beneath the deck (between load bearing concrete pads) should be treated to prevent growth of foliage. If the weighbridge is required to be used for trade purposes, concrete end walls will need to be constructed.



ADVANTAGES & DISADVANTAGES SUMMARY

TYPE	ADVANTAGES	DISADVANTAGES
TYPE A Above-Ground Weighbridge	<ul style="list-style-type: none"> + Least expensive weighbridge option + Least site preparation required before construction + Most common type of weighbridge supplied 	<ul style="list-style-type: none"> - Requires the largest site footprint of all the options
TYPE B Standard Semi-Pit Weighbridge	<ul style="list-style-type: none"> + Second least expensive weighbridge option + Common type of weighbridge supplied + Smaller site footprint required than the above ground weighbridge option 	<ul style="list-style-type: none"> - Some excavation required before construction - Requires drainage considerations
TYPE C1 Single Clear-Space Semi-Pit Weighbridge	<ul style="list-style-type: none"> + Ideal for sites with a weighbridge bypass road adjacent to one side of the weighbridge + Ideal for sites with an office or building adjacent to one side of the weighbridge + Smaller site footprint required than the semi-pit weighbridge option 	<ul style="list-style-type: none"> - Some excavation required before construction - Requires access holes (typically in the deck) to access the loadcells for servicing purposes - Access holes make this option slightly more expensive than the semi-pit weighbridge option - Trade Measurement Authority exemption in writing required - Requires drainage considerations
TYPE C2 No Clear-Space Semi-Pit Weighbridge	<ul style="list-style-type: none"> + Ideal for sites with two weighbridge bypass roads adjacent to both sides of the weighbridge + Ideal for sites with offices or buildings adjacent to both sides of the weighbridge + Smaller site footprint required than the semi-pit weighbridge option 	<ul style="list-style-type: none"> - Some excavation required before construction - Requires access holes (typically in the deck) to access the loadcells for servicing purposes - Access holes make this option more expensive than the semi-pit weighbridge option - Trade Measurement Authority exemption in writing required - Requires drainage considerations
TYPE C3 No Clear-Space Semi-Pit Weighbridge Flush Top	<ul style="list-style-type: none"> + Requires the smallest site footprint of all the options + Ideal for sites with extreme space restrictions + Ideal for sites with shared weighing and traffic areas + Ideal for sites where vehicles are weighed during loading by forklifts + Reduces or eliminates confined space entry 	<ul style="list-style-type: none"> - Extensive excavation work required - Significant preparation required before construction - Requires drainage considerations - Confined space entry may still apply depending on site-specific Workplace Health and Safety
TYPE D Fully Inground Weighbridge	<ul style="list-style-type: none"> + Requires the smallest site footprint of all the options + Ideal for sites with extreme space restrictions + Ideal for sites with shared weighing and traffic areas + Ideal for sites where vehicles are weighed during loading by forklifts 	<ul style="list-style-type: none"> - Most expensive weighbridge option due to extensive excavation work required - Most preparation required before construction - Requires drainage considerations - Confined space to access the loadcells requiring special training for service personnel (typically charged as a higher hourly rate)
TYPE E Multi-Deck Weighbridge	<ul style="list-style-type: none"> + Weigh individual axles or axle groups to maximise vehicle loading and minimise legal axle overloading for road transport 	<ul style="list-style-type: none"> - More expensive than a single deck option
TYPE F Portable Weighbridge	<ul style="list-style-type: none"> + Inexpensive weighbridge option + Ideal for non-trade operation + Ideal for temporary sites (six months to two years) 	<ul style="list-style-type: none"> - Sites operating longer than two years should consider a permanent installation