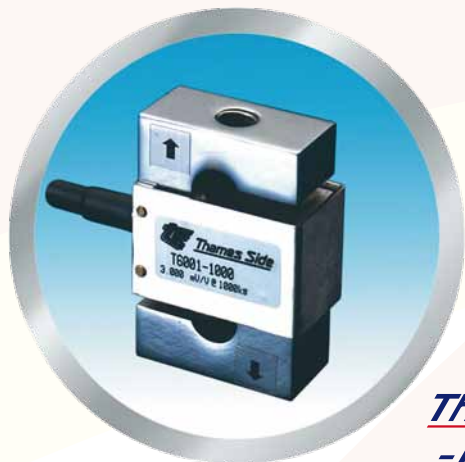


# T61 SERIES

## S-TYPE LOADCELL

### DESCRIPTION

The T61 Series folded bending beam loadcell is manufactured from high quality tool steel, and fully sealed to IP-66. Although normally utilised in tension, given the suitable adaptors and the appropriate application, it is possible to use the loadcell in compression or even in a bidirectional manner. The loadcell is typically used in tank and vessel weighing, bag filling machines and conveyors.

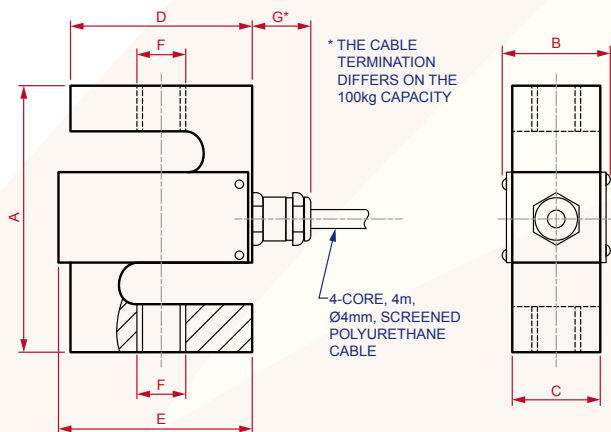


by  
*Thames Side*  
*-Maywood*

### FEATURES

- High-Quality Tool Steel, Nickel Plated Construction
- Industry Standard Configuration
- Fully Potted and Sealed to IP-66
- Corrosion Resistant
- Adaptors Available for Using the Loadcell in Compression/Bidirectional Manner
- Simple Low Cost Installation
- Optional Proof Tested Eyebolts or Rod End Bearings

### DIMENSIONS



Capacity	A	B	C	D	E	F	G
100kg	75	20	17	50	53	M10 x 1.5	60
250kg, 500kg	75	27	19	50	53	M12 x 1.75	20
1t, 1.5t, 2t	75	33	25	50	53	M12 x 1.75	20

All Dimensions in mm Unless Noted Otherwise

### SPECIFICATIONS

Maximum Capacities	100kg, 250kg, 500kg, 1t, 1.5t, 2t
Rated Output	3mV/V $\pm$ 0.25%
Combined Error	$\pm$ 0.035% of Capacity
Non-Repeatability	$\pm$ 0.015% of Capacity
Creep Over 30 Minutes	$\pm$ 0.03% of Capacity
Temperature Effect on Zero Balance	$\pm$ 0.0025% of Capacity/ $^{\circ}$ C
Temperature Effect on Sensitivity	$\pm$ 0.005% of Capacity/ $^{\circ}$ C
Compensated Temperature Range	-10 $^{\circ}$ C to +40 $^{\circ}$ C
Operating Temperature Range	-40 $^{\circ}$ C to +80 $^{\circ}$ C
Safe Load Limit	150% of Capacity
Ultimate Breaking Load	300% of Capacity
Zero Balance	< $\pm$ 1%
Input Resistance	380 $\Omega$ $\pm$ 30 $\Omega$
Output Resistance	350 $\Omega$ $\pm$ 1.5 $\Omega$
Insulation Resistance	>5G $\Omega$ @ 100V
Recommended Excitation Voltage	10V
Maximum Excitation Voltage	15V
Environmental Rating	IP-66
Shipping Weight	100kg to 500kg: 0.5kg 1t to 2t: 0.75kg

### CABLE

COLOUR	DESIGNATION
Red	+ Excitation
Blue	- Excitation
Green	+ Signal
Yellow	- Signal

4-Core, 4m,  $\varnothing$ 4mm, Screened Polyurethane Cable.  
Screen is not connected electrically to loadcell.

### OPTIONS

- Spherical Rod End Bearings:
- Adaptors for Compression/Bidirectional Use

**Accuweigh Pty Ltd**

WESTERN AUSTRALIA (HEAD OFFICE):  
PHONE: (08) 9259 5535

SOUTH AUSTRALIA OFFICE:  
PHONE: (08) 8447 5011

NEW SOUTH WALES (SYDNEY) OFFICE:  
PHONE: (02) 9728 4877



[www.accuweigh.com.au](http://www.accuweigh.com.au)

VICTORIA OFFICE:  
PHONE: (03) 9548 5554

NEW SOUTH WALES (NEWCASTLE) OFFICE:  
PHONE: (02) 4966 8900

QUEENSLAND OFFICE:  
PHONE: (07) 3265 5520