



DESCRIPTION

The PSB is a robust, high-accuracy shearbeam loadcell, available in capacities from 250kg to 10t in tool steel electroless nickel plated and 250kg to 5t in stainless steel.

A very popular Australasian shearbeam where it has become the industry standard and the major OEM-quality scale makers loadcell of choice.

Sealed to IP-67, it is a perfect cell for platform scales, hoppers, silos, bin weighing and high capacity axle weighing where a harsh environment demands a well specified rugged shearbeam.

A full range of mounting accessories including purpose built mounting kits with in built swivel bearings.

APPLICATIONS

- Floor Scales
- Hoppers, Silos and Bin Weighing
- Hopper Scales and Net Weighing Scales

FEATURES

- Trade Approved for 1t to 5t, NMI No. S338
- Trade Approved for 10t, NMI No. S346
- Robust Tool Steel or Stainless Steel Construction
- Fully Encapsulated
- Australasian Industry Standard
- Capacities from 250kg ~ 10t
- Matched mV/V and Impedance

CABLE

Type: 5.5mm, Screened, PVC Sheath, 6-Core, 0.24mm² (24 AWG)

Length: 3m, (250kg ~ 1t)
 5m (2.5t ~ 10t)

COLOUR	DESIGNATION
Red	+ Excitation
Black	- Excitation
Brown	+ Sense
Blue	- Sense
Green	+ Signal
White	- Signal

by 
...better value by design!

TECHNICAL DATA

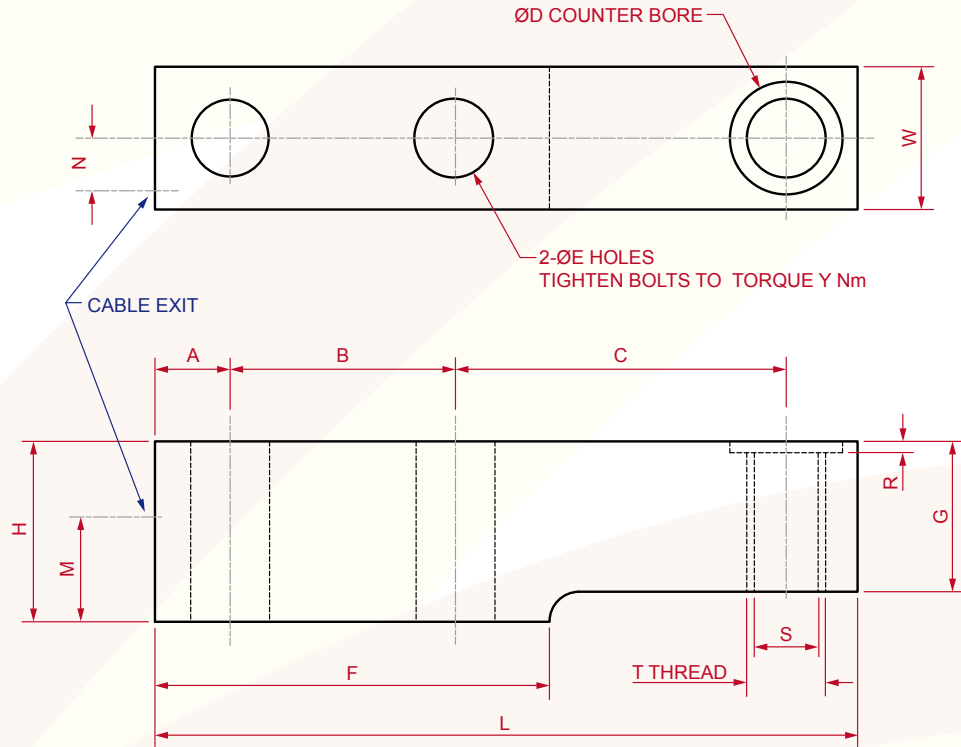
Nominal Capacity	250kg ~ 10t
Signal Output at Capacity	2mV/V ±0.1%
Linearity Error	<0.017% FSO
Non-Repeatability	<0.010% FSO
Combined Error	<0.023% FSO
Hysteresis	<0.010% FSO
Creep/Zero Return (30 Minutes)	<0.023%/<0.017% FSO
Zero Balance	1.000% Capacity
Temperature Effect on Span/10°C	<0.010% FSO
Temperature Effect on Zero/10°C	<0.015% Capacity
Compensated Temperature Range	-10°C to +50°C
Operating Temperature Range	-30°C to +70°C
Service Load	100% of Rated Capacity

Safe Load	150% of Rated Capacity
Ultimate Failure Load	300% of Rated Capacity
Input Resistance	410Ω Nominal
Output Resistance	352.2Ω Matched ±0.2Ω
Insulation Resistance (Bridge to Ground)	>5,000MΩ @ 100VDC
Excitation Voltage (Recommended)	5V to 15V AC/DC
Excitation Voltage (Maximum)	18V AC/DC
Storage Temperature	-50°C to +70°C
Environmental Finish	IP-67
Material	Alloy Tool Steel
Finish	Electroless Nickel Plated

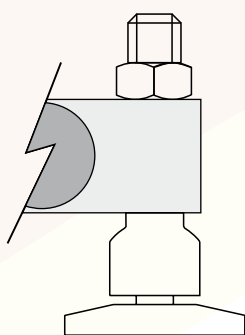
DIMENSIONS

Capacity	A	B	C	D	E	F	G	H	L	M	N	R	S	T	W	Y	Weight
250kg	15	38	61.5	Ø12	Ø10.3	65	20	28.5	125	17	7.6	2	Ø10.3	M12 x 1.75	26.5	45Nm	0.65kg
500kg, 1t	15	38	61.5	Ø12	Ø10.3	65	26	28.5	125	14.25	7.6	2	Ø10.3	M12 x 1.75	26.5	45Nm	0.65kg
2.5t, 5t	20	60	88	Ø30	Ø20.25	105	40	48	187	28	14	3	Ø21	N/A	40	365Nm	2.20kg
10t	24	60	117	Ø40	Ø26	120	58	68	225	39	17	5	Ø26	N/A	48	815Nm	4.35kg

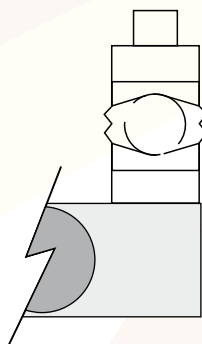
All Dimensions in mm Unless Noted Otherwise



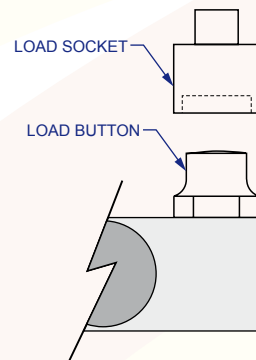
ACCESSORIES



SWIVEL FOOT



BALL & CUP



LOAD SOCKET &
BUTTON

Accuweigh Pty Ltd

WESTERN AUSTRALIA (HEAD OFFICE):
PHONE: (08) 9259 5535

SOUTH AUSTRALIA OFFICE:
PHONE: (08) 8447 5011

NEW SOUTH WALES (SYDNEY) OFFICE:
PHONE: (02) 9728 4877



www.accuweigh.com.au

VICTORIA OFFICE:
PHONE: (03) 9548 5554

NEW SOUTH WALES (NEWCASTLE) OFFICE:
PHONE: (02) 4966 8900

QUEENSLAND OFFICE:
PHONE: (07) 3265 5520