

DESCRIPTION

The ASB Series is a superb, low-cost weighing solution, yet surprisingly accurate with good long life features.

The ASB is a shearbeam loadcell with M8 threads on the 125kg model and M12 threads on the remainder of the range. This is one of the most cost effective shearbeam loadcells available.

Robustly constructed in design with carefully selected high strength aircraft aluminium, it is an ideal selection for most weighing applications.

Used extensively in the agricultural industry it has proved to be a rugged long life loadcell. Marine grade anodised, the ASB has an excellent protection rating of IP-67 and is backed by a three-year warranty.

Many of the metric accessories throughout our accessory range can be used with this model.



APPLICATIONS

- Lower Cost Weighing Applications
- Agricultural and Harsh Environments
- All General Industrial Weighing
- Both Tension and Compression

FEATURES

- Marine Grade Anodised
- Robust Construction
- Most Competitively Priced
- Capacities from 125kg to 1t
- Simple Installation
- Suitable for Most Installations

TECHNICAL DATA

Signal Output at Capacity	2mV/V \pm 0.1%
Linearity Error	<0.025% FSO
Non-Repeatability	<0.010% FSO
Combined Error	<0.030% FSO
Hysteresis	<0.010% FSO
Creep/Zero Return (30 Minutes)	<0.050%/0.035% FSO
Zero Balance	<3% Capacity
Temperature Effect on Span (/10°C)	<0.015% FSO
Temperature Effect on Zero (/10°C)	<0.020% FSO
Operating Temperature Range	-30°C to +70°C
Compensated Temperature Range	-10°C to +40°C
Storage Temperature	-50°C to +70°C
Sealing	IP-67

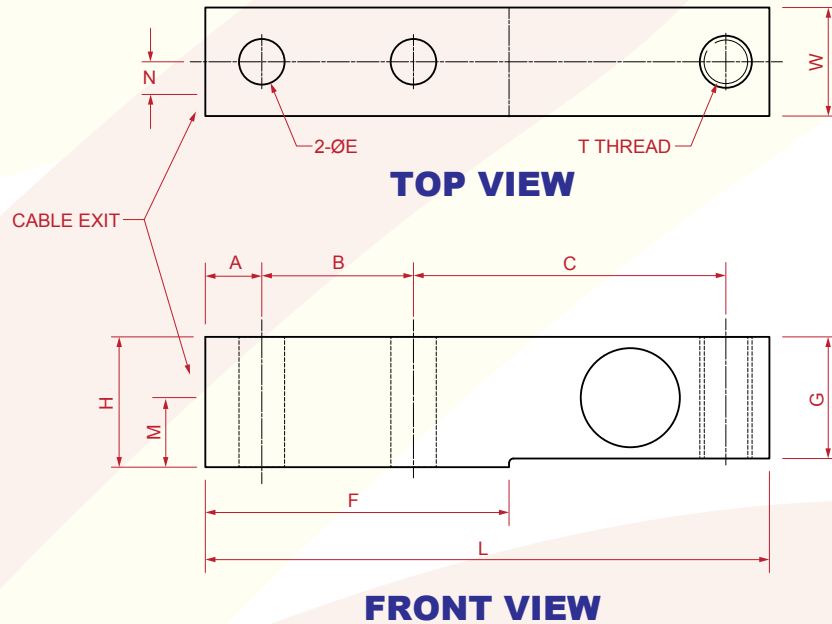
Safe Load	125% Capacity
Ultimate Load	300% Capacity
Input Resistance	410 Ω Nominal
Output Resistance	352 Ω Nominal
Insulation Resistance	>5,000M Ω @ 100VDC
Excitation Voltage (Recommended)	5V to 12V AC/DC
Excitation Voltage (Maximum)	15V AC/DC
Cable Type	4mm, Screened, PVC Sheath, 4 Core x 0.09mm ² (28 AWG)
Cable Length	3m
Construction Material	Aluminium
Finish	Marine Anodised

DIMENSIONS

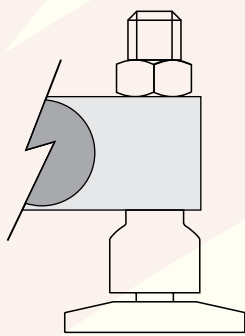
Capacity	A	B	C	E	F	G	H	L	M	N	T	W	Weight
125kg	10	30	52	Ø6.5	55	20	25	100	12.5	5.2	M8x1.25	22	0.2kg
250kg	13	35	72	Ø10.3	70	23	25	130	13.5	7.5	M12x1.75	25	0.3kg
500kg	13	35	72	Ø10.3	70	28	30	130	16	7.5	M12x1.75	25	0.35kg
1t	13	35	72	Ø10.3	70	30	31.5	130	16	7.5	M12x1.75	25	0.35kg

All Dimensions in mm Unless Noted Otherwise

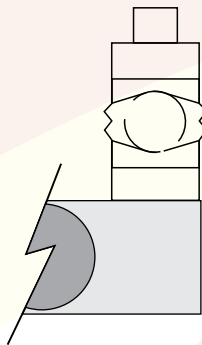
COLOUR	DESIGNATION
Red	+ Excitation
Black	- Excitation
Brown	+ Sense
Blue	- Sense
Green	+ Signal
White	- Signal



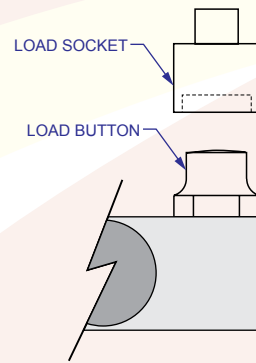
ACCESSORIES



SWIVEL FOOT



BALL & CUP



LOAD SOCKET &
BUTTON

Accuweigh Pty Ltd

WESTERN AUSTRALIA (HEAD OFFICE):
PHONE: (08) 9259 5535

SOUTH AUSTRALIA OFFICE:
PHONE: (08) 8447 5011

NEW SOUTH WALES (SYDNEY) OFFICE:
PHONE: (02) 9728 4877



www.accuweigh.com.au

VICTORIA OFFICE:
PHONE: (03) 9548 5554

NEW SOUTH WALES (NEWCASTLE) OFFICE:
PHONE: (02) 4966 8900

QUEENSLAND OFFICE:
PHONE: (07) 3265 5520