

HEAVY-DUTY WEIGH BARS



The Iconix Heavy Duty Weigh Bars are compatible with any Iconix FX model indicator. With the high weighing capacity, they are ideal for use under large cattle crushes and similar applications. Shock absorbing rubber mounts protect the loadcells and maintain weighing accuracy in spite of distortion or expansion/contraction of the crate or crush to which the Weigh Bars are fitted.

FEATURES

- Weigh up to 3,000kg
- 1,000mm in length
- Heavy duty 6 metre cables
- Super tough for large animals and heavy platforms or crushes

CALIBRATION

Auto ranging resolution. With standard 3000kg Weigh Bar set:

| | |
|---------------|---------------|
| 0 - 20kg | x 0.1kg steps |
| 20 - 50kg | x 0.2kg steps |
| 50 - 200kg | x 0.5kg steps |
| 200 - 500kg | x 1kg steps |
| 500 - 3,000kg | x 2kg steps |

INDICATOR RANGE



FX1



FX15



FX21



FX41

by

STANDARD INDICATOR DETAILS

The FX1 is the entry level electronic weighing system from Iconix. Simplicity itself - just turn it on and "you're weighing".

There are two weighing modes:

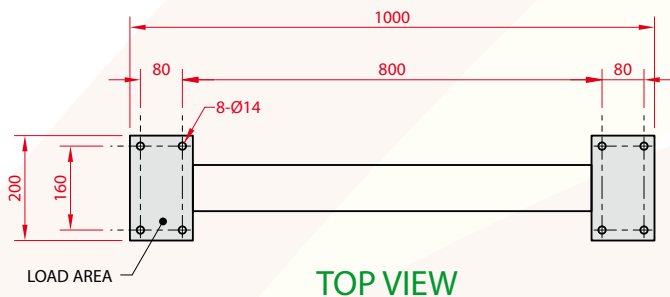
FREE for weighing static loads, such as produce.

HOLD for livestock weighing - after a press of the WEIGH key, the accurately averaged weight of the animal is locked on the display until the next animal is weighed.

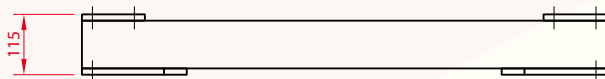
- Auto zero at switch-on
- Intelligent zero-tracking
- Powered by external 12V battery - battery lead supplied
- Optional AC adaptor for mains operation
- Low battery indicator/auto low-voltage shut off



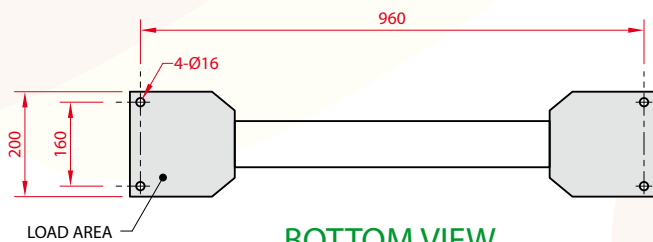
DIMENSIONS



TOP VIEW



FRONT VIEW



BOTTOM VIEW

OPTIONS

FX Printer



The FX Printer is the ideal companion product for your FX21 or FX41 system. It is very portable and rugged, and takes standard adding machine rolls.

It can be mounted next to your indicator during weighing with records being printed each time you press the WEIGH key.

WinFX Linker Software



Transfers records and statistics from an FX21, FX31 or FX41 to an IBM compatible PC.

View and sort records in simple to use Windows based software.

"What If" drafting statistics - allows changing of draft limits on screen and recalculation of statistics.

Accuweigh Pty Ltd

WESTERN AUSTRALIA (HEAD OFFICE):
PHONE: (08) 9259 5535

SOUTH AUSTRALIA OFFICE:
PHONE: (08) 8447 5011

NEW SOUTH WALES (SYDNEY) OFFICE:
PHONE: (02) 9728 4877



www.accuweigh.com.au

VICTORIA OFFICE:
PHONE: (03) 9548 5554

NEW SOUTH WALES (NEWCASTLE) OFFICE:
PHONE: (02) 4966 8900

QUEENSLAND OFFICE:
PHONE: (07) 3265 5520