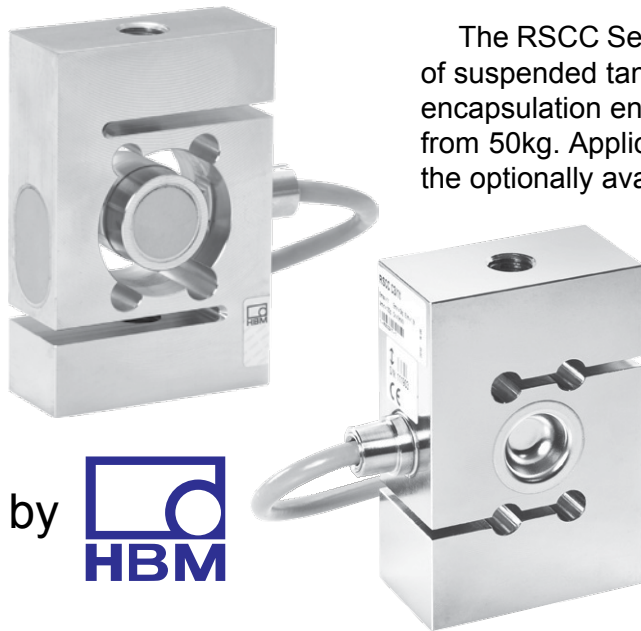


RSCC SERIES

STAINLESS STEEL S-TYPE TENSION LOADCELL

DESCRIPTION

The RSCC Series is a stainless steel, s-type loadcell is ideal for the weighing of suspended tanks or for use in conveyor, batching or hybrid scales. Hermetic encapsulation ensures the IP-68 protection even for small maximum capacities from 50kg. Applications in the chemical industry or mills are also possible with the optionally available versions for ATEX Zone 1/21 or 2/22.



by 

FEATURES

- Loadcells with Strain Gauge Measuring System
- Capacities: 50kg, 100kg, 200kg, 500kg, 1t, 2t, 5t
- Hermetically Encapsulated to IP-68
- Rust-Resistant Materials
- Meets EMC Requirements as per EN 45 501
- Six-Wire Circuit
- EX-Protection Design as per ATEX (Optional)

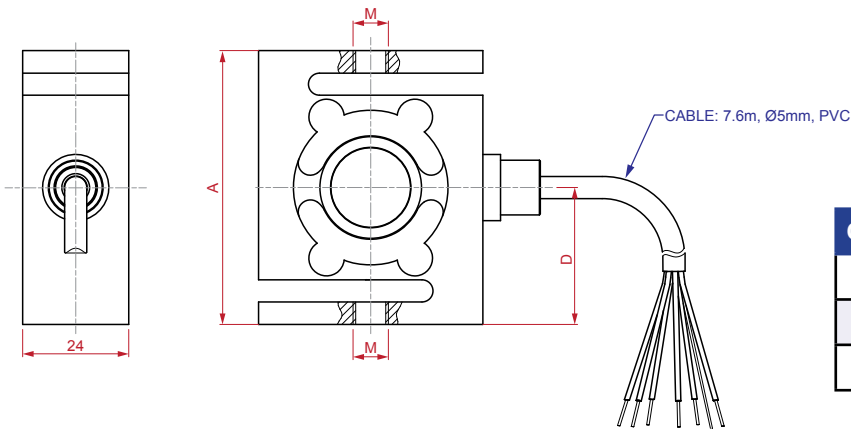


SPECIFICATIONS

Nominal Load (E_{MAX})	50kg	100kg	200kg	500kg	1t	2t	5t
Accuracy Class	C3						
Maximum Number of Loadcell Intervals (n_{LC})	3,000 Divisions						
Minimum Loadcell Verification Interval (V_{MIN})	0.0120% of E_{MAX}						
Sensitivity (C_n)	2mV/V						
Sensitivity Tolerance	±0.25%						
Zero Tolerance	0mV/V ±0.1mV/V						
Temperature Effect on Sensitivity (TK_C)	±0.0170%/10°C @ 20°C to 40°C, ±0.0110%/10°C @ -10°C to 20°C, Typical						
Temperature Effect on Zero Balance (TK_0)	±0.0166%/10°C, Typical						
Hysteresis Error (d_{ny})	±0.0166% of Sensitivity, Typical						
Non-Linearity (d_{lin})	±0.0166% of Sensitivity, Typical						
Creep (d_{cr}) Over 30 Minutes	±0.0166% of Sensitivity						
Input Resistance (R_{LC})	389Ω ±15Ω						
Output Resistance (R_0)	350Ω ±1.5Ω						
Insulation Resistance (R_{is})	>2GΩ						
Reference Excitation Voltage (U_{ref})	5V						
Nominal Range of Excitation Voltage (B_U)	0.5V to 12V						
Nominal Temperature Range (B_T)	-10°C to +40°C						
Service Temperature Range (B_{tu})	-30°C to +70°C						
Storage Temperature Range (B_{st})	-50°C to +85°C						
Safe Load Limit (E_L)	150% of E_{MAX}						
Ultimate Breaking Load (E_g)	200% of E_{MAX}		300% of E_{MAX}			200% of E_{MAX}	
Permissible Dynamic Load (F_{srel}) (Vibration Amplitude According to DIN 50100)	70% of E_{MAX}						
Deflection at E_{MAX} (s_{nom}), ±0.05mm	0.35mm	0.4mm	0.35mm	0.1mm	0.2mm	0.2mm	0.4mm
Weight (G) Approximately	0.7kg		1kg	1.4kg		1.7kg	2.2kg
Protection Class to EN60529	IP-68 (Test Conditions 100 Hours Under 1m Water Column)						
Material: Measuring Element Cable Fitting Cable-Sheath	Stainless Steel as per EN 10088-1. Stainless Steel/Neoprene PVC						

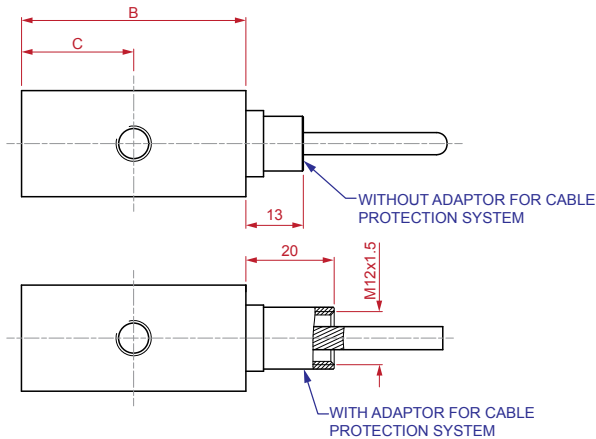
DIMENSIONS

CAPACITIES: 50kg to 200kg

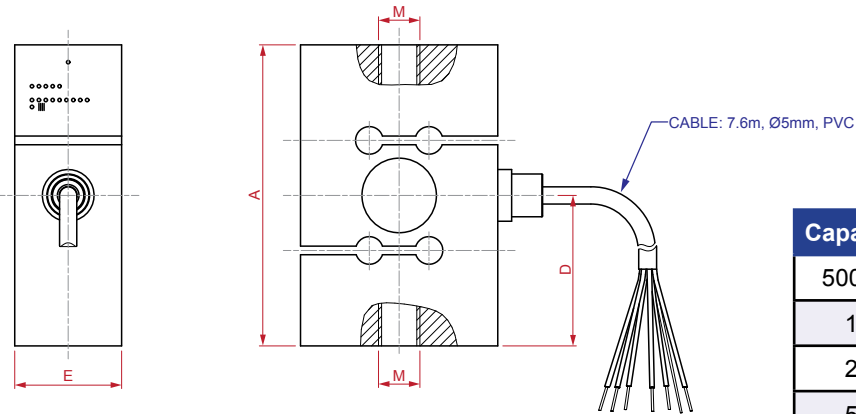


Capacity	A	B	C	D	M
50kg	62	50.8	25.4	31	M8
100kg	62	50.8	25.4	31	M8
200kg	87.3	57.2	28.6	43.7	M12

All Dimensions in mm Unless Noted Otherwise

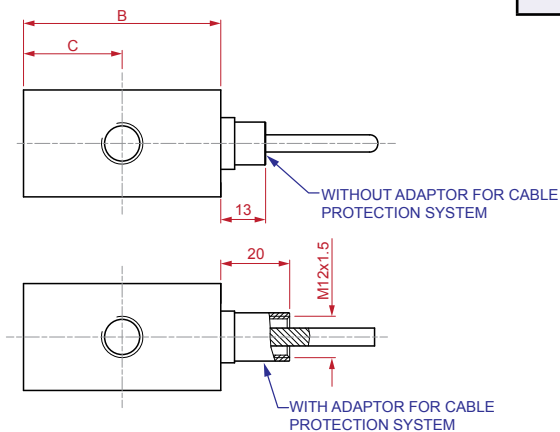


CAPACITIES: 500kg to 5t

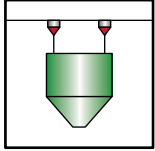


Capacity	A	B	C	D	E	M
500kg	87.3	57.2	28.6	43.7	31	M12
1t	87.3	57.2	28.6	43.7	31	M12
2t	100	69.8	34.9	50	31	M24x2
5t	100	76.2	38.1	50	36.5	M24x2

All Dimensions in mm Unless Noted Otherwise



APPLICATIONS



CABLE

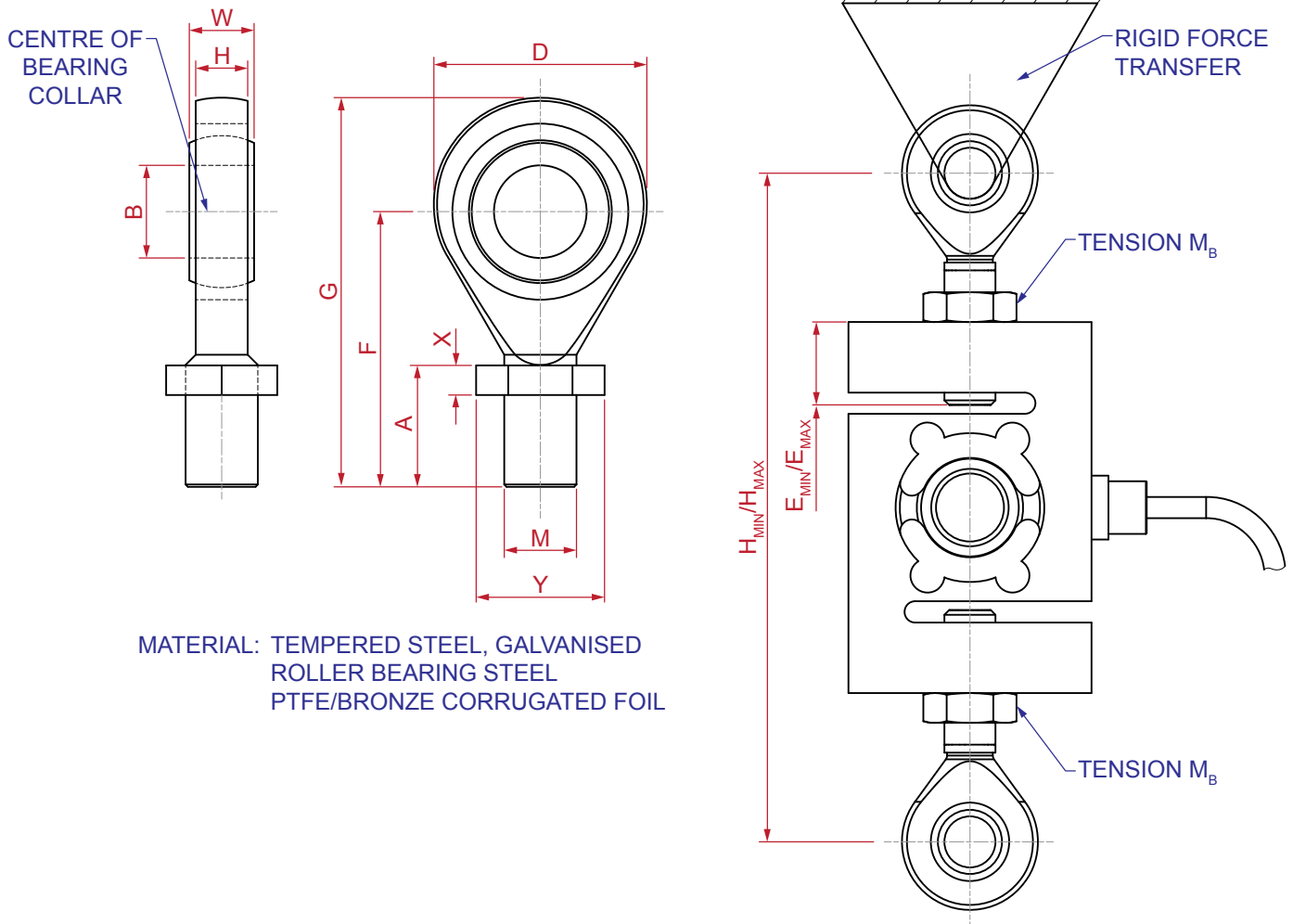
COLOUR	DESIGNATION
Blue	+ Excitation
Black	- Excitation
Green	+ Sense
Grey	- Sense
White	+ Signal
Red	- Signal
Wire	Shield

Length: 7.6m

OPTIONS

- Mounting Assemblies
- Rod Ends

MOUNTING ACCESSORIES



Accuweigh Pty Ltd

WESTERN AUSTRALIA (HEAD OFFICE):
PHONE: (08) 9259 5535

SOUTH AUSTRALIA OFFICE:
PHONE: (08) 8447 5011

NEW SOUTH WALES (SYDNEY) OFFICE:
PHONE: (02) 9728 4877



www.accuweigh.com.au

VICTORIA OFFICE:
PHONE: (03) 9548 5554

NEW SOUTH WALES (NEWCASTLE) OFFICE:
PHONE: (02) 4966 8900

QUEENSLAND OFFICE:
PHONE: (07) 3265 5520