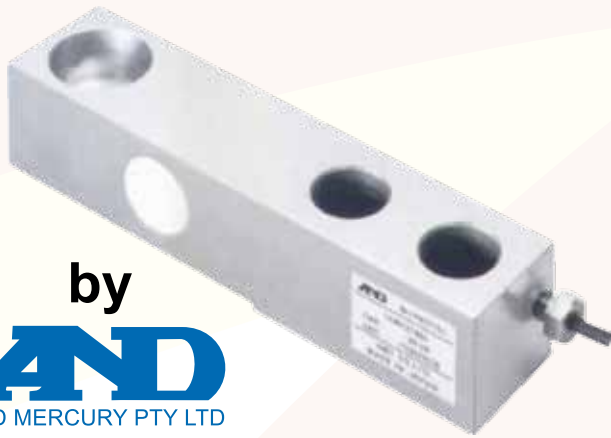


LCM13 SERIES STAINLESS STEEL SHEARBEAM LOADCELL



by

AND
A&D MERCURY PTY LTD

MODEL	CAPACITY
LCM13K500	500kg
LCM13T001	1t
LCM13T002	2t
LCM13T003	3t
LCM13T005	5t

HIGHLIGHTS

- Trade Approved, NMI No. S446
- Steel Construction Body is Ideal Protection from Water, Moisture and Corrosion (IP-67)
- Low-Profile and Light-Weight for Easy Mounting
- Compact Size
- For Both Compression and Tension Usage
- Can be Used for Multi-Point Weighing

SPECIFICATIONS

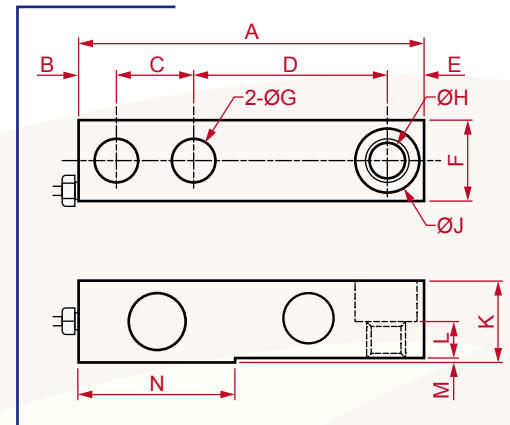
Rated Output	2mV/V ±0.1%
Maximum Safe Overload	150% of Rated Capacity
Combined Error	±0.03% of Rated Output
Zero Balance	±1% of Rated Output
Recommended Excitation Voltage	5V to 12VDC
Maximum Excitation Voltage	15VDC
Input Terminal Resistance	Approximately 380Ω ±20Ω
Output Terminal Resistance	350Ω ±3.5Ω
Insulation Resistance	Greater Than 5000MΩ/50VDC
Operating Temperature	-15°C to +60°C
Temperature Effect on Zero	0.016% of Rated Output/10°C
Temperature Effect on Span	0.013% of Load/10°C
Cable Length	3m
Environmental Rating	IP-67

DIMENSIONS

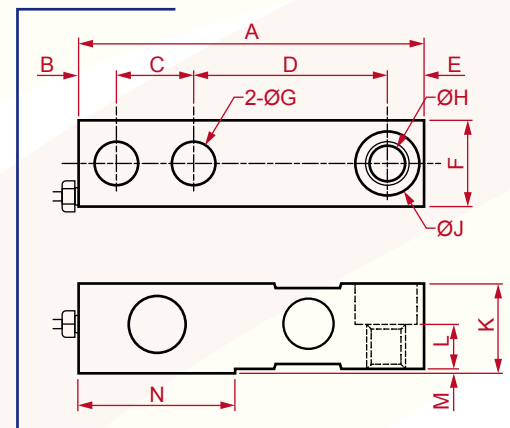
CABLE COLOUR CODES

RED EXC+
WHITE EXC-
GREEN SIG+
BLUE SIG-
YELLOW SHIELD

LCM13K500
LCM13T001
LCM13T002
LCM13T003



LCM13T005



	A	B	C	D	E	F	G	H	J	K	L	M	N
LCM13K500	130	16	25	76	13	32	2-Ø14	M12	Ø21	32	15	2	58
LCM13T001	171	19	38	95	19	38	2-Ø21	M20	Ø30.2	38	18	2	76
LCM13T002	171	19	38	95	19	43	2-Ø21	M20	Ø30.2	43	20.5	2	76
LCM13T005	171	19	38	95	19	43	2-Ø21	M20	Ø30.2	43	20.5	2	76

Accuweigh Pty Ltd

WESTERN AUSTRALIA (HEAD OFFICE):
PHONE: (08) 9259 5535

SOUTH AUSTRALIA OFFICE:
PHONE: (08) 8447 5011

NEW SOUTH WALES (SYDNEY) OFFICE:
PHONE: (02) 9728 4877



ACCUWEIGH

www.accuweigh.com.au

VICTORIA OFFICE:
PHONE: (03) 9548 5554

NEW SOUTH WALES (NEWCASTLE) OFFICE:
PHONE: (02) 4966 8900

QUEENSLAND OFFICE:
PHONE: (07) 3265 5520