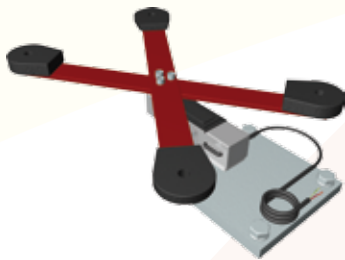
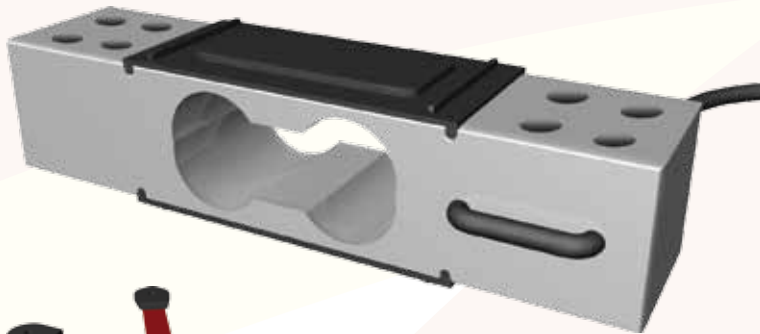


LC4204 SERIES ALUMINIUM SINGLE-POINT LOADCELL



TYPICAL APPLICATION

by
AND
A&D MERCURY PTY LTD

MODEL	CAPACITY
LC4204-K300	300kg
LC4204-K600	600kg

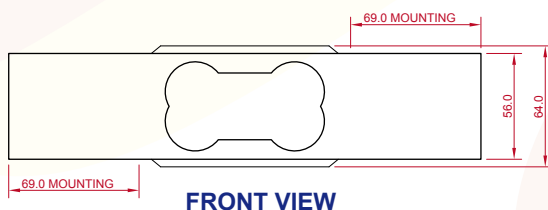
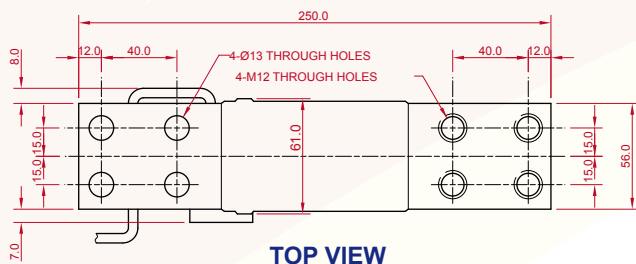
HIGHLIGHTS

- Aluminium Single-Point Loadcell
- Can be Used for Single-Point or Multi-Point Applications
- Available with or without Waterproofing
- Parallelogram Type Construction for Reliability and Strength
- 700mm x 600mm Platforms Can be Used
- Temperature Compensation Maintains Both Zero and Span from -10°C to +40°C
- Deadweight Up to 20% of Capacity, Load Weight and Deadweight Up to 120% of Capacity
- Moisture-Proof

DIMENSIONS

CABLE COLOUR CODES

RED EXC +
WHITE EXC -
GREEN SIG +
BLUE SIG -
YELLOW SHIELD



SPECIFICATIONS

Rated Output	1.5mV/V ±2%
Maximum Safe Overload	200% of Rated Capacity
Combined Error	±0.015% of Rated Capacity
Creep	±0.05% of Rated Capacity/ Hour
Zero Balance	±20% ±5% of Rated Output
Recommended Excitation Voltage	12V
Maximum Excitation Voltage	15V
Input Terminal Resistance	400Ω
Output Terminal Resistance	350Ω ±5Ω
Insulation Resistance	Greater Than 5000MΩ/50VDC
Operating Temperature	-20°C to +60°C
Temperature Effect on Zero	0.004% of Rated Output/°C
Temperature Effect on Span	0.014% of Rated Output/°C
Cable Length	5m

Accuweigh Pty Ltd

WESTERN AUSTRALIA (HEAD OFFICE):
PHONE: (08) 9259 5535

SOUTH AUSTRALIA OFFICE:
PHONE: (08) 8447 5011

NEW SOUTH WALES (SYDNEY) OFFICE:
PHONE: (02) 9728 4877



www.accuweigh.com.au

VICTORIA OFFICE:
PHONE: (03) 9548 5554

NEW SOUTH WALES (NEWCASTLE) OFFICE:
PHONE: (02) 4966 8900

QUEENSLAND OFFICE:
PHONE: (07) 3265 5520