

# LC-5217 SERIES

## DOUBLE-ENDED SHEARBEAM LOADCELL



MODEL	CAPACITY
LC-5217-T010	10t
LC-5217-T020	20t
LC-5217-T025	25t

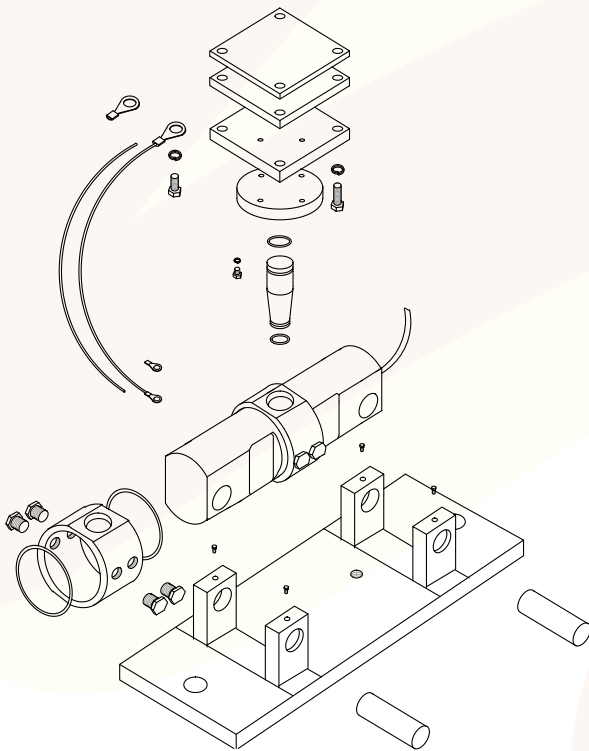
Tool Steel Construction

### HIGHLIGHTS

- Mounting Attachments Available
- Moisture-Protected

### SPECIFICATIONS

Rated Output	2mV/V $\pm$ 0.1%
Maximum Safe Overload	200% of Rated Capacity
Combined Error	$\pm$ 0.02% of Rated Capacity
Creep	$\pm$ 0.025% of Rated Output/20 Minutes
Zero Balance	$\pm$ 1% of Rated Output
Compensated Temperature Range	-20°C to +60°C
Recommended Excitation Voltage	12V
Maximum Excitation Voltage	15V
Input Terminal Resistance	Approximately 800 $\Omega$
Output Terminal Resistance	700 $\Omega$ $\pm$ 5 $\Omega$
Insulation Resistance	Greater Than 5000M $\Omega$ /50VDC
Temperature Effect on Zero	0.003% of Rated Output/ $^{\circ}$ C
Temperature Effect on Span	0.0014% of Rated Output/ $^{\circ}$ C
Typical Cable Length	10m



by  
**AND**  
A&D MERCURY PTY LTD

**Accuweigh Pty Ltd**

WESTERN AUSTRALIA (HEAD OFFICE):  
PHONE: (08) 9259 5535

SOUTH AUSTRALIA OFFICE:  
PHONE: (08) 8447 5011

NEW SOUTH WALES (SYDNEY) OFFICE:  
PHONE: (02) 9728 4877



**ACCUWEIGH**

[www.accuweigh.com.au](http://www.accuweigh.com.au)

VICTORIA OFFICE:  
PHONE: (03) 9548 5554

NEW SOUTH WALES (NEWCASTLE) OFFICE:  
PHONE: (02) 4966 8900

QUEENSLAND OFFICE:  
PHONE: (07) 3265 5520